

93 Tiverton Road

Birmingham, B29 6BW

2026-2027

£415.38 pw

£103.84 PPPW.

This 4 double bedroom student property benefits from having 2 bathrooms, and 4 good sized double bedrooms. The communal areas are bright and spacious.*A must see property!* Street parking available

EPC rating - E

Council Tax band - B (students exempt)

Term - 12 months

Deposit - £519.23

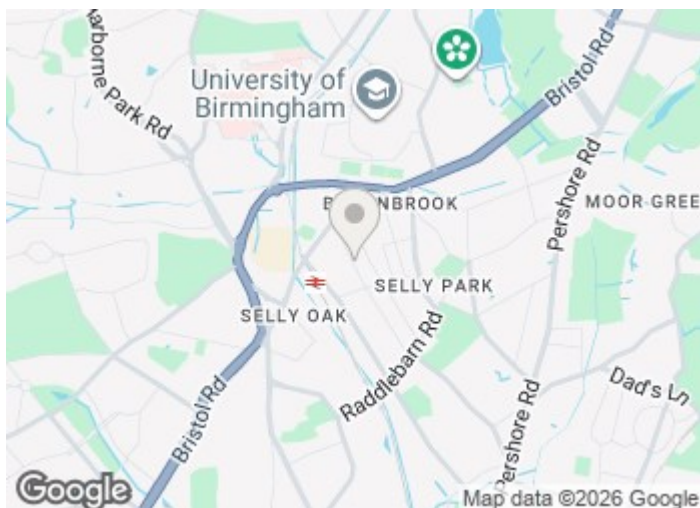
£1,880 Per Month

93 Tiverton Road

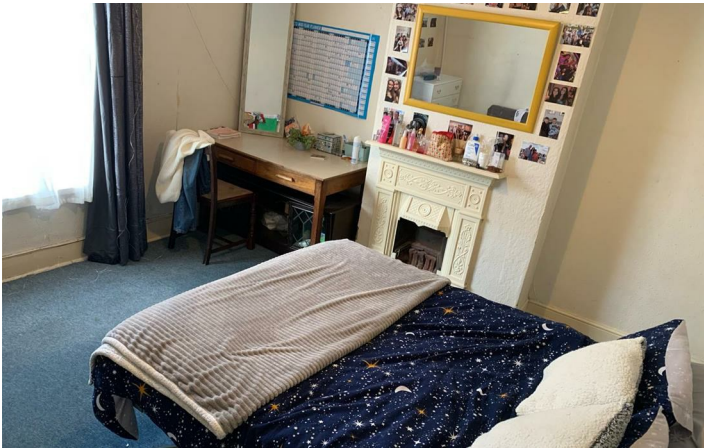
Birmingham, B29 6BW



- 4 Large double bedrooms
- Fully fitted kitchen with appliances
- Spacious living area
- 2 Bathrooms
- 10 Minute walk to UoB
- EPC Rating E



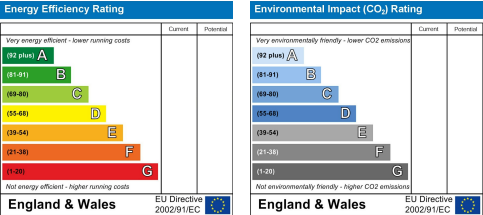
[Directions](#)





Floor Plan

These particulars, whilst believed to be accurate are set out as a general outline only for guidance and do not constitute any part of an offer or contract. Intending purchasers should not rely on them as statements of representation of fact, but must satisfy themselves by inspection or otherwise as to their accuracy. No person in this firms employment has the authority to make or give any representation or warranty in respect of the property.



543 Bristol Road, Selly Oak, Birmingham B29 6AU. T: 0121 472 3331 Website: www.direct-housing.co.uk
E-mail: sellyoak@direct-housing.co.uk lettings@direct-housing.co.uk accounts@direct-housing.co.uk

